



>>> INSTRUMENTATION

AUTOMATIC DOCKING STATIONS



Improve your gas detection program...automatically!

Managing your gas detection program has never been easier, thanks to Shawcity Gas Detector Automatic Docking Stations. Imagine a state-of-the-art gas detection program that will automatically provide you everything from better compliance to reduced labor and calibration gas costs. We will help you create a better gas detection program...automatically.



What is an automatic dock?

Shawcity automatic docks will be the nerve center of your gas detection program. Simply place an instrument into the dock. Shawcity docks *automatically* bump test each instrument, *automatically* download detector event and maintenance data, *automatically* check each detector for more than 12 different performance functions, *automatically* run a full calibration if the unit requires it...then *automatically* make all of that data available to you...in clear, easy-to-read reports!

Why Shawcity docks?

Sure, some other companies make units they call “docks,” but Shawcity offers a truly unique, automated gas detection management system.

■ Easy Recordkeeping

Let's face it, recordkeeping is a lot of work. Downloading individual instrument records can take hours. Tracking calibration and exposure records is even worse. With Sperian automatic docks, all relevant data is automatically recorded each time you dock an instrument.

■ Full Instrument Check-up

Every time you dock an instrument, the dock will automatically test more than a dozen performance functions. The dock will automatically fail any instrument that is not within your defined performance specifications.

■ Automatic Calibration

Every time, the dock will check the unit to be sure the instrument is within calibration range. If the unit requires calibration — due either to elapsed time or unit performance — the dock will fully calibrate the instrument...and it takes only about 2 minutes for a full calibration!

■ Reduced Calibration Labor

A manual bump test of a single instrument takes the average user about 2 minutes. A Sperian automatic dock can perform a bump test in about 22 seconds. If you bump 10 instruments every morning, you could save over 60 hours of labor by the end of the year.

■ Calibration Gas Savings

Sperian docks use a lot less gas than manual calibrations. Here's an example: if you have 10 four-gas detectors and follow industry guidelines for daily verification, you could spend more than \$10,000 per year in gas costs. Thanks to our automated, precise dosing, Sperian automatic docks can reduce your gas costs by over 60%. Sperian automatic docks could save you well over \$6,000 per year in gas costs alone.

■ Reduced Legal Liability

No matter how good your recordkeeping is, manual systems are prone to error. And in case of an accident, errors mean liability. Our docks accurately and automatically record every test. Your recordkeeping is flawless.



Efficient and Economical

Biosystems Monitor Type:	ToxiPro®/Ltd®/3Ltd™ Single-Gas Monitor	MultiPro™ Multi-Gas Monitor	PHD6™ Multi-Gas Monitor
Bump Test	Under 30 seconds	Under 30 seconds	Under 45 seconds (for 4-gas configuration of O ₂ , LEL, CO, H ₂ S)
Calibration Test	About 1 minute	About 1 minute	Under 2 minutes (for 4-gas configuration of O ₂ , LEL, CO, H ₂ S)

Dock Software

There are 2 software programs available for PC interface.

Docking Station Software

- Allows you to easily customize the instrument's settings
- Configures dock options including calibration gas set-up
- Provides docking station live bump and calibration testing status

Database Management Software

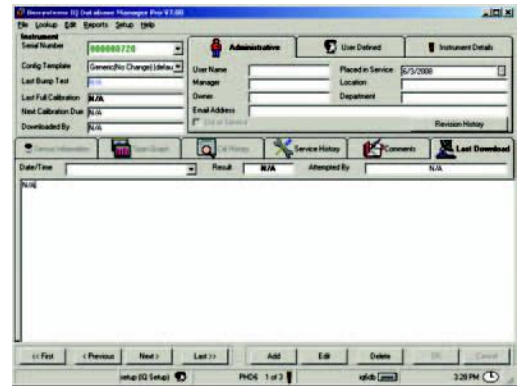
- Allows you to access and manage the data for all instruments in your database



Dock Launched Screen

Database Management Software Features Database Manager PRO

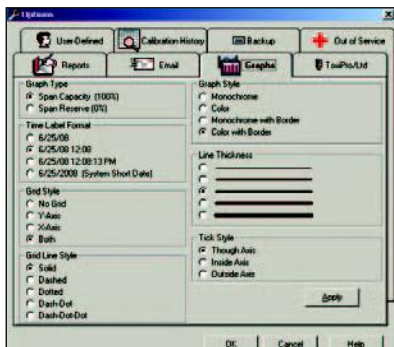
Maintains instrument and calibration data	✓
Generates reports, certificates, graphs at anytime	✓
<ul style="list-style-type: none"> Bump History/Overdue/Status Report Calibration History/Overdue/Status Report Calibration and Bump Certificates Sensor Span Reserve Report Instrument Service History and Status Instrument Firmware 	
User defined text fields	✓
Email alert option set-up	✓
Software version	Postgre SQL Server Engine
Capacity	4 Terabit



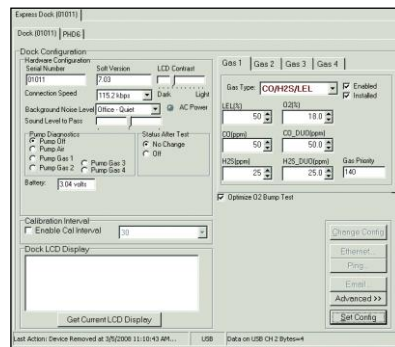
Database Management Launched Screen

Calibration #	Date	Max Span	Cal Gas	Lot #	Auto Span	Cal Value	Calibrated From	Last Zero	Last Span
Bump Only-1		00000							
7/13/2004 11:02:50 AM	49.3 ppm	79322	31.0 ppm	25.4 ppm	6/23/2004 2:11:42 PM	7/13/2004 11:03:53 AM			
7/13/2004 11:52:05 AM	54.5 ppm	79322	25.0 ppm	30.2 ppm	6/23/2004 2:11:42 PM	7/13/2004 11:52:54 AM			
7/13/2004 1:17:57 PM	54.7 ppm	79322	25.0 ppm	31.4 ppm	6/23/2004 2:11:43 PM	7/13/2004 1:18:45 PM			
7/13/2004 1:18:10 PM	54.7 ppm	79322	25.0 ppm	31.4 ppm	7/13/2004 1:18:10 PM	7/13/2004 1:18:10 PM			
7/13/2004 3:25:38 PM	44.9 ppm	79322	31.0 ppm	25.4 ppm	6/23/2004 2:11:43 PM	7/13/2004 3:25:56 PM			
7/13/2004 3:29:28 PM	44.9 ppm	79322	25.0 ppm	25.4 ppm	6/23/2004 2:11:43 PM	7/13/2004 3:29:56 PM			

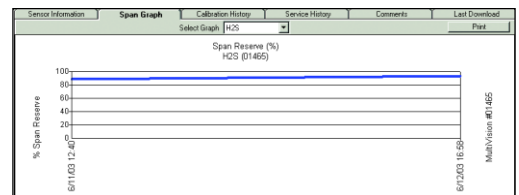
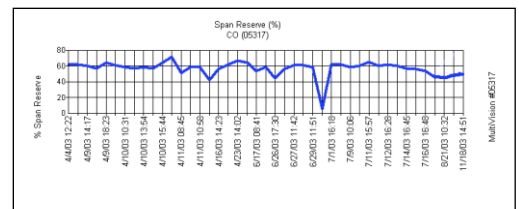
Historic Report



Manage database with Data Management Software program. Print reports, certifications and graphs at any time!



Instrument and gas settings can easily be customized through IQ Express Software program.



Graphs Examples

Automatic Docks and Accessories

Automatic docks are available for our Toxi family of single gas instruments and our MultiPro™ and PhD6™ lines of multi-gas instruments.



Toxi Single-Gas Docking Station



MultiPro Multi-Gas Docking Station



PhD6 Multi-Gas Docking Station

Part Number	Description
54-46-9000	Docking station, stand alone or USB set up, standard version (for O ₂ , CO or H ₂ S)
54-46-9100	Docking station, stand alone or USB set up, enhanced version (for O ₂ , CO, H ₂ S, SO ₂ , Cl ₂ , NO ₂ , NH ₃ , HCN or PH ₃)
54-46-9000N	Docking station, Ethernet-ready standard version (for O ₂ , CO or H ₂ S)
54-46-9100N	Docking station, Ethernet-ready enhanced version (for O ₂ , CO, H ₂ S, SO ₂ , Cl ₂ , NO ₂ , NH ₃ , HCN or PH ₃)

MultiPro Automatic Docking Stations for Biosystems MultiPro Multi-Gas Monitor

Part Number	Description
54-49-9000	Docking station, stand alone or USB set up
54-49-9000N	Docking station Ethernet-ready

PhD6 Automatic Docking Stations for Biosystems PHD6 Multi-Gas Monitor

Part Number	Description
54-54-9200	2-ports,* stand alone or USB set up
54-54-9200N	2-ports,* Ethernet-ready
54-54-9400	4-ports,** stand alone or USB set up
54-54-9400N	4-ports,** Ethernet-ready

*2-port version recommended for standard CO, O₂, H₂S and LEL sensors configuration.

**4-port version recommended for units with IR sensor, PID sensor or non-standard configuration.

Note: All docks include software, installation disks and manuals.

Docking Station Accessories

Part Number	Description
12-039	Demand flow regulator (required for dock usage)
54-05-001	Calibration gas tank holder



Tel: 01793 780 622
 Fax: 01793 784 466
www.shawcity.co.uk

Shawcity Limited
 Instrument House
 91-92
 Shrivensham Hundred Business Park
 Watchfield, Oxfordshire
 SN6 8TY