

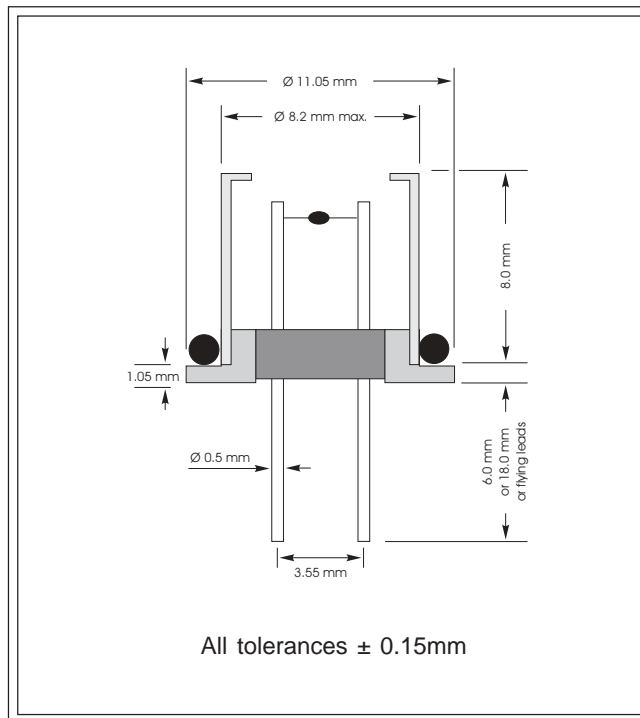


300P CiTipeL[®]

Performance Characteristics

Gases Detected	Most combustible gases and vapours
Range	0-100% LEL
Operating Voltage	2.0 ± 0.1 V d.c.
Detector Operating Current	280mA in recommended circuit
Poison Resistance	Highly resistant (see graphs)
Output Sensitivity	11 to 15 mV/%methane
T90 Response Time	< 15 seconds
Linear to	0 - 5% methane
Long Term Sensitivity Drift*	<1% signal / month
Long Term Zero Drift*	<1% LEL _{methane} /month
Warranty Period	12 months from date of despatch

* Measured over a 6 month period



Relative Sensitivity

The table below shows the variation in response of a 300P CiTipeL on exposure to a range of gases and vapours at the same %LEL concentration. The figures are experimentally derived and expressed relative to the methane signal (=100).

Note: The results are intended for guidance only, and for the most accurate measurements an instrument should be calibrated using the gas under investigation.

Gas/Vapour	Relative Sensitivity*	Gas/Vapour	Relative Sensitivity*
Methane	100	Acetone	45
Propane	70	Methyl ethyl ketone	40
n-Butane	65	Toluene	20
n-Pentane	60	Ethyl Acetate	35
n-Hexane	40	Hydrogen	100
n-Heptane	40	Cyclohexane	40
n-Octane	25	Unleaded petrol	35
Methanol	70	Ethylene	90
Ethanol	50	1,3 Butadiene	70
Iso-propyl alcohol	40	Acetylene	75

*Each sensitivity has been rounded to the nearest 5%

Ordering Information

300P CiTipeLs are available with or without flying leads. In the version without leads the pellistors are supplied with 0.5mm diameter pins either 6mm or 18mm long suitable for direct mounting on a PCB.

Order Code

Open Can 300P
 with flying leads connection 300P-C
 with 6mm pin connection 300P-D
 with 18mm pin connection 300P-Z

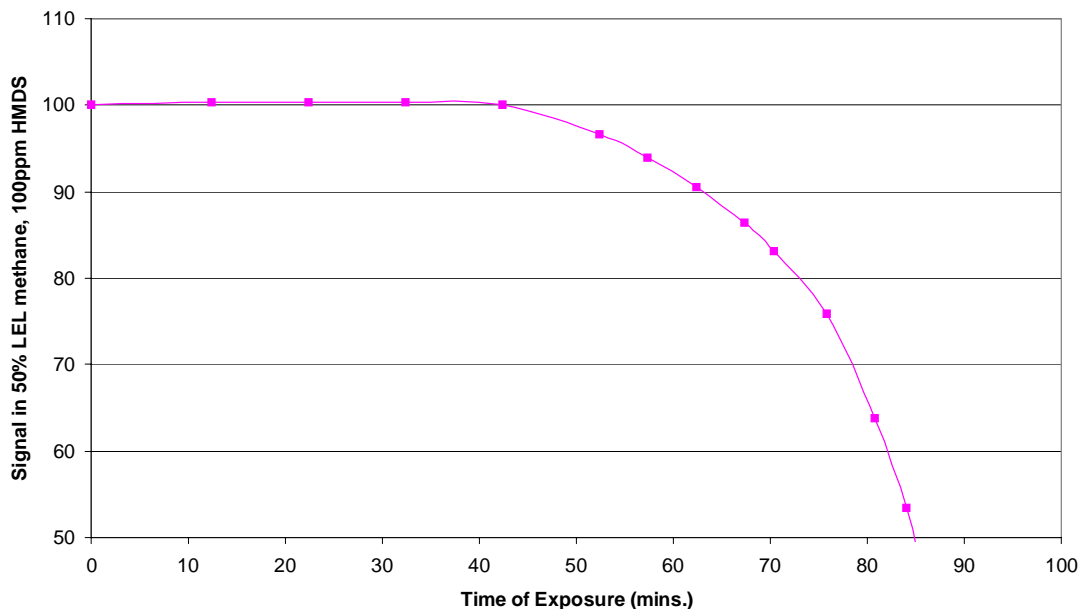


Distributed by:

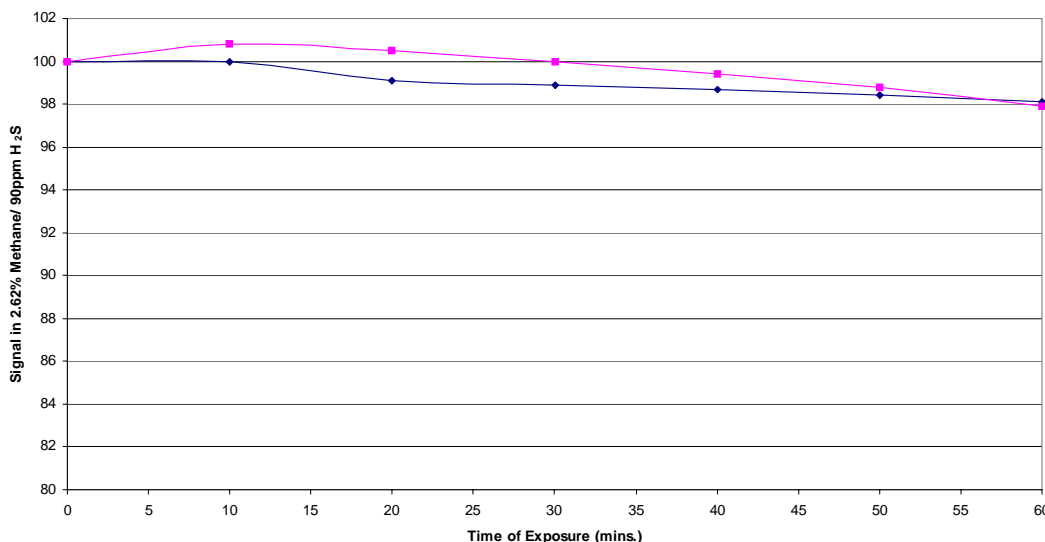
Shawcity Ltd
 91-92 Shrivenham Hundred Business Park
 Watchfield, Oxfordshire, SN6 8TY
 Tel: 01793 780622
 Email: sensororders@shawcity.co.uk
 www.shawcity.co.uk



Accelerated Life Tests 300P - HMDS Poison Resistance



Accelerated Life Tests 300P - H₂S Poison Resistance



It is recommended that confirmation of adequate sensor performance be conducted on a regular basis by means of a defined, sensor calibration procedure. The calibration frequency will depend upon the environment in which the sensor is operated and on the perceived level of risk from the build up of flammable atmospheres.

Every effort has been made to ensure the accuracy of this document at the time of printing. In accordance with the company's policy of continued product improvement City Technology Limited reserves the right to make product changes without notice. No liability is accepted for any consequential losses, injury or damage resulting from the use of this document or from any omissions or errors herein. The data is given for guidance only. It does not constitute a specification or an offer for sale. The products are always subject to a programme of improvement and testing which may result in some changes in the characteristics quoted. As the products may be used by the client in circumstances beyond the knowledge and control of City Technology Limited, we cannot give any warranty as to the relevance of these particulars to an application. It is the clients' responsibility to carry out the necessary tests to determine the usefulness of the products and to ensure their safety of operation in a particular application.

Performance characteristics on this data sheet outline the performance of newly supplied sensors. Output signal can drift below the lower limit over time.